



# SAMSUNG HOSPITALITY DISPLAYS

## HF690 SERIES (EU\_CIS)

**Drive More Powerful and Convenient Guest Engagement with Samsung's HF690 Displays**

In today's fast-paced hospitality environments, convenience is key – both for guests seeking immediate access to everything needed for an exceptional stay and for hotel staff seeking more efficient ways to deliver it. Through thorough compatibility and an intuitive design, Samsung's new HF690 displays make it easier for these facilities to delight guests. Backed by the powerful Tizen OS, the HF690 series offers both compelling content and fast access to essential services through customizable, easy-to-navigate menus. Additionally, the displays' reinforced security not only ensures guest privacy, but also allows managers to develop, test and launch web applications for even broader functionality.

### HIGHLIGHTS

- Build and launch compatible web applications within the powerful Tizen OS
- Maintain impactful, secure content performance via the integrated H.Browser
- Simplify operations for guests and staff through a tailored home menu
- Develop and share personalized content through the centralized LYNK REACH 4.0 server
- Manage multi-display networks more efficiently via LYNK HMS Server connectivity

## Samsung Hospitality Displays secured by Knox



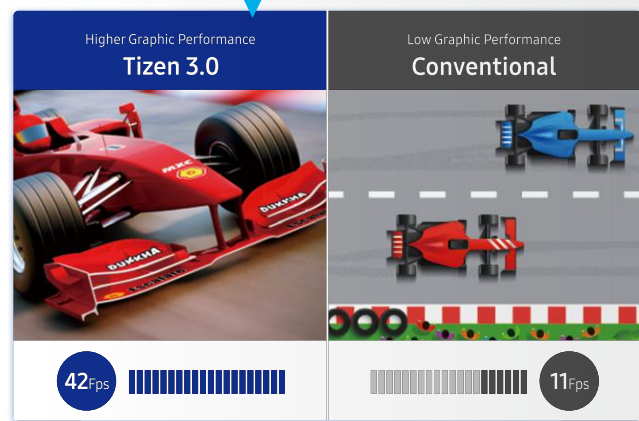
Application



Platform



System



### POWERFUL GRAPHIC PERFORMANCE WITH ENHANCED SECURITY

Backed by the powerful TIZEN operating system, Samsung's hospitality displays ensure secure, seamless delivery of vital hospitality content. The TIZEN OS arms each display with a rigid, three-layer protective structure that provides added defense across the application, platform and system layers. This reinforced security also enables TIZEN's integrated H.Browser technology to successfully render 2D and 3D content and achieve faster upload and response times.



#### Web App SDK

- HTML5 and Standards Based
- TV Extended Web API
- Light Weight Web Simulator
- Extensive Tool suite



#### Utility Tools & Support

- Live Debugging
- Real TV Connection
- Debugging & Profiling
- Tizen Community

### SIMPLE, COMPATIBLE WEB APP DEVELOPMENT

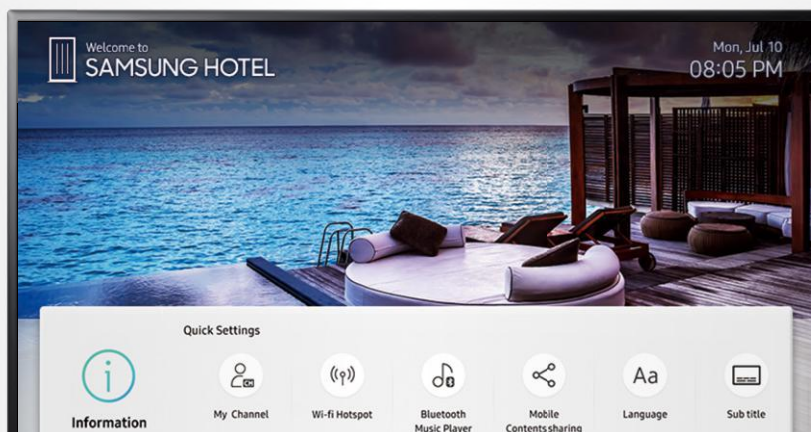
Beyond its advanced graphics capabilities, Samsung's H.Browser technology empowers fast and accurate application development from any location. All applications are compatible with, and can be developed and stored within, the TIZEN OS, and are backed by an advanced Software Development Kit (SDK). The platform's Web Simulator and Remote Web Inspector (RWI) tools further refine applications through real-time performance and security testing.



Logo Image



Background Images / Video



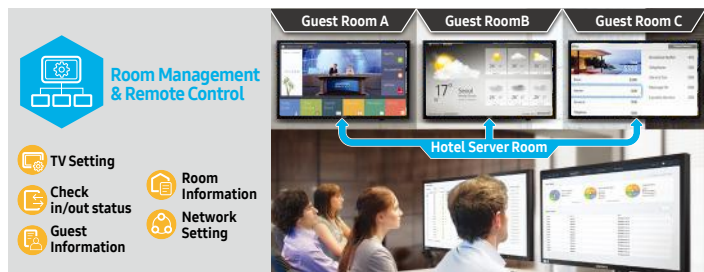
SmoothText Overlay



Customizable & Unlimited Feature Icons

### A TAILORED HOME MENU FOR GUESTS

The embedded TIZEN platform also enables hotel managers to customize their displays' home menus to match their unique brand and offerings. This includes unlimited icons in the bottom scroll bar and the addition of customized imagery and logo placement in the background. As a result, managers and guests alike can navigate the interface freely and at improved efficiency.



## CENTRALIZED, REAL-TIME MANAGEMENT

As a unified content management solution, LYNK REACH 4.0 accommodates LAN, Wi-Fi, and coaxial infrastructures to amplify hotel management, monitoring and guest service functions. The LYNK REACH 4.0 platform's centralized, real-time monitoring streamlines maintenance demands. Hotel managers can select single display or display groups and troubleshoot guest issues before they escalate.



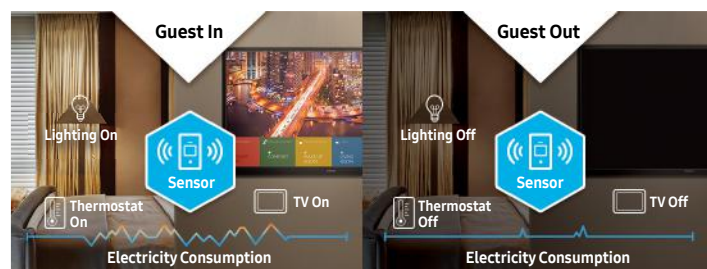
## CONVENIENT AND THOROUGH ROOM MANAGEMENT

Hospitality display users additionally can leverage the displays' integrated LYNK HMS technology to manage room settings and guest-staff communication more conveniently and efficiently. LYNK HMS' Room Management Solution (RMS) streamlines hotel maintenance while offering more detailed visibility into in-room device performance and energy use. The complementary In-Room Control (IRC) Service allows guests to manage lighting, drapes and on-screen content from a single, user-friendly interface.



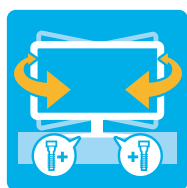
## END-TO-END PERSONALIZED SERVICE

Hotels additionally can use the LYNK REACH 4.0 platform to deliver customized messages to guests relevant to their specific stay details or interests. As guests arrive, hotel operators can greet them with a personalized welcome message while also promoting on-site amenities and promotions. Once the stay concludes, LYNK REACH 4.0 offers express check-out to save guests the time and hassle of a trip to the lobby.



## DELIGHT GUESTS AT A REDUCED COST

Samsung's LYNK HMS technology empowers hotel operators to deliver a pleasant and memorable guest experience in a more efficient, cost-friendly manner. The platform's Energy Management Solution (EMS) adjusts in-room heat and air settings based on guest occupancy and avoids wasting energy on empty rooms. LYNK HMS's Content Management Solution (CMS) streamlines content creation and delivery throughout the hotel, driving more impactful and hassle-free delivery of important messages.



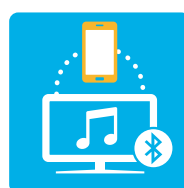
### SWIVEL STAND

Customize preferred viewing angle and protect displays with lock-down plates



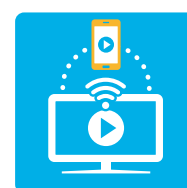
### PLUG AND PLAY

Easily set up and synchronize multiple displays and servers



### BLUETOOTH MUSIC PLAYER

Stream music from personal devices directly through the display's speakers



### CONTENT SHARING

(MOBILE TO TV MIRRORING, SMART VIEW)

Synchronize with up to four mobile devices for seamless content streaming



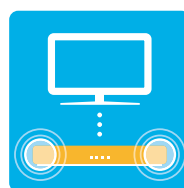
### SECURITY MODE

Prevent unauthorized external sources such as HDMI, USB and TTX



### LYNK DRM

Safe, cost-efficient alternative to hardware-based content protection systems



### SOUND BAR COMPATIBILITY

Connect the displays with powerful audio



### SI COMPATIBILITY

Save time and effort when connecting with system integrators' set-top boxes



# SPECIFICATIONS

MODEL		32EF690 HG32EF690DB	43EF690 HG43EF690DB	49EF690 HG49EF690DB	55EF690 HG55EF690DB
Display	Backlight	LED	LED	LED	LED
	Inch (Real Inch)	32	43	49	55
	Resolution	1920 x 1080	1920 x 1080	1920 x 1080	1920 x 1080
Video	Picture Engine	HyperReal	HyperReal	HyperReal	HyperReal
	Dynamic Contrast Ratio	Mega Contrast	Mega Contrast	Mega Contrast	Mega Contrast
	Micro Dimming	M/D Pro	M/D Pro	M/D Pro	M/D Pro
	Active Crystal Color	N/A	N/A	N/A	N/A
	Wide Color Enhancer (Plus)	Yes	Yes	Yes	Yes
	Auto Motion Plus	N/A	N/A	N/A	N/A
	Film Mode	Yes	Yes	Yes	Yes
Audio	Dolby Digital Plus	Yes	Yes	Yes	Yes
	DTS Codec	N/A	N/A	N/A	N/A
	Sound Output (RMS)	20W(L:10W, R:10W)	20W(L:10W, R:10W)	20W(L:10W, R:10W)	20W(L:10W, R:10W)
	Speaker Type	2CH(Down Firing w/Bass Reflex)	2CH(Down Firing w/Bass Reflex)	2CH(Down Firing w/Bass Reflex)	2CH(Down Firing w/Bass Reflex)
	Bluetooth Audio	Yes	Yes	Yes	Yes
Smart Service	Smart TV Type	Smart	Smart	Smart	Smart
	Web Browser	Yes	Yes	Yes	Yes
	Smart View	Yes	Yes	Yes	Yes
Smart Feature	TV to Mobile - Mirroring	N/A	N/A	N/A	N/A
	Mobile to TV - Mirroring, DLNA	Yes	Yes	Yes	Yes
Differentiation	Sports Mode	N/A	N/A	N/A	N/A
	All Care Protection	N/A	N/A	N/A	N/A
Feature	Processor	Quad-Core	Quad-Core	Quad-Core	Quad-Core
	Accessibility	Voice guide(UK English, German, French, Spanish, Italian, Dutch, Polish, Danish, Swedish, Finnish, Norwegian, Portuguese, Russian(only when connecting to Network in EE, LV, LT))/ Enlarge/ High contrast/ Multi-output Audio	Voice guide(UK English, German, French, Spanish, Italian, Dutch, Polish, Danish, Swedish, Finnish, Norwegian, Portuguese, Russian(only when connecting to Network in EE, LV, LT))/ Enlarge/ High contrast/ Multi-output Audio	Voice guide(UK English, German, French, Spanish, Italian, Dutch, Polish, Danish, Swedish, Finnish, Norwegian, Portuguese, Russian(only when connecting to Network in EE, LV, LT))/ Enlarge/ High contrast/ Multi-output Audio	Voice guide(UK English, German, French, Spanish, Italian, Dutch, Polish, Danish, Swedish, Finnish, Norwegian, Portuguese, Russian(only when connecting to Network in EE, LV, LT))/ Enlarge/ High contrast/ Multi-output Audio
	Digital Clean View	Yes	Yes	Yes	Yes
	Auto Channel Search	Yes	Yes	Yes	Yes
	Auto Power Off	Yes	Yes	Yes	Yes
	Caption (Subtitle)	Yes	Yes	Yes	Yes
	ConnectShare™ (HDD)	Yes	Yes	Yes	Yes
	ConnectShare™ (USB 2.0)	Yes	Yes	Yes	Yes
	EPG	Yes	Yes	Yes	Yes
	Game Mode	Yes	Yes	Yes	Yes
	OSD Language	27 European Languages + Russian(only when connecting to Network in EE, LV, LT)	27 European Languages + Russian(only when connecting to Network in EE, LV, LT)	27 European Languages + Russian(only when connecting to Network in EE, LV, LT)	27 European Languages + Russian(only when connecting to Network in EE, LV, LT)
	Picture-In-Picture	N/A	N/A	N/A	N/A
	BT HID Support	Yes	Yes	Yes	Yes
	USB HID Support	Yes	Yes	Yes	Yes
	Teletext (TTX)	Yes	Yes	Yes	Yes
System	Digital Broadcasting	DVB-T2CS2	DVB-T2CS2	DVB-T2CS2	DVB-T2CS2
	Analog Tuner	Yes	Yes	Yes	Yes
	CI (Common Interface)	CI+(1.3)	CI+(1.3)	CI+(1.3)	CI+(1.3)
	Data Broadcasting	HbbTV1.5 (CZ, SK, DE, AT, FR, ES, EE)/ HbbTV1.0(PL, HU, CH, BE, NL, LU, PT, DK, FI)/ MHEG 5(GB, IE)	HbbTV1.5 (CZ, SK, DE, AT, FR, ES, EE)/ HbbTV1.0(PL, HU, CH, BE, NL, LU, PT, DK, FI)/ MHEG 5(GB, IE)	HbbTV1.5 (CZ, SK, DE, AT, FR, ES, EE)/ HbbTV1.0(PL, HU, CH, BE, NL, LU, PT, DK, FI)/ MHEG 5(GB, IE)	HbbTV1.5 (CZ, SK, DE, AT, FR, ES, EE)/ HbbTV1.0(PL, HU, CH, BE, NL, LU, PT, DK, FI)/ MHEG 5(GB, IE)
Hospitality Feature	Samsung LYNK™ HMS Compatibility	Yes	Yes	Yes	Yes
	H.Browser	Yes	Yes	Yes	Yes
	Samsung LYNK™ REACH (IP)	REACH 4.0	REACH 4.0	REACH 4.0	REACH 4.0

MODEL		32EF690 HG32EF690DB	43EF690 HG43EF690DB	49EF690 HG49EF690DB	55EF690 HG55EF690DB
Hospitality Feature	Samsung LYNK™ REACH (RF)	REACH 4.0	REACH 4.0	REACH 4.0	REACH 4.0
	Hospitality Home Menu	Yes (Home Menu 2017)	Yes (Home Menu 2017)	Yes (Home Menu 2017)	Yes (Home Menu 2017)
	Bluetooth Music Player (Mobile → TV)	Yes	Yes	Yes	Yes
	Hospitality Plug&Play (Easy Set-up)	Yes	Yes	Yes	Yes
	Auto Source Mode	Yes	Yes	Yes	Yes
	Power On Mode	Yes	Yes	Yes	Yes
	Hotel Channel List	Yes	Yes	Yes	Yes
	Channel Menu Display	Yes	Yes	Yes	Yes
	Mixed Channel List (ATSC, DVB-T/T2/C/S2, Analog)	Yes	Yes	Yes	Yes
	My Channel	Yes	Yes	Yes	Yes
	Energy Saving Mode(BLU control)	Yes	Yes	Yes	Yes
	Logo Display with Time Out Setting (BMP/Movie)	Yes	Yes	Yes	Yes
	Welcome Message	Yes	Yes	Yes	Yes
	RJ12 / IR Pass Through	Yes	Yes	Yes	Yes
	External Clock Compatibility	Yes	Yes	Yes	Yes
	Clock Back Up Supply	Yes	Yes	Yes	Yes
	External Clock Dimming Control	Yes	Yes	Yes	Yes
	Software Clock	N/A	N/A	N/A	N/A
	Multi Code Remote control	Yes	Yes	Yes	Yes
	Sound Bar Compatibility	Yes	Yes	Yes	Yes
	Music Mode (Input: PC/AV/Component/HDMI)	Yes	Yes	Yes	Yes
	Music Mode Backlight on/off	Yes	Yes	Yes	Yes
	TTX Clock Update (Analogue)	Yes	Yes	Yes	Yes
	USB Cloning	Yes	Yes	Yes	Yes
	Smoovie Compatibility	Yes	Yes	Yes	Yes
	Soft AP	Yes	Yes	Yes	Yes
	On/Off Timer (Schedule)	Yes	Yes	Yes	Yes
	Alarm	Yes	Yes	Yes	Yes
	Samsung LYNK™ DRM RF	Yes	Yes	Yes	Yes
	Samsung LYNK™ DRM IP	Yes	Yes	Yes	Yes
	Pro:Idiom RF	N/A	N/A	N/A	N/A
	Pro:Idiom IP	N/A	N/A	N/A	N/A
	bLAN	N/A	N/A	N/A	N/A
	Security Mode	Yes	Yes	Yes	Yes
	S/W EPG (Solution EPG)	Yes	Yes	Yes	Yes
Input & Output	HDMI (Side/Rear)	2/1	2/1	2/1	2/1
	USB (Side/Rear)	2/0	2/0	2/0	2/0
	Component In (Y/Pb/Pr) (Side/Rear)	0/1	0/1	0/1	0/1
	Composite In (AV) (Side/Rear)	1	1	1	1
	Ethernet (LAN) (Side/Rear)	1/0	1/0	1/0	1/0
	Headphone (Side/Rear)	0/1	0/1	0/1	0/1
	Audio Out (Mini Jack / LR) (Side/Rear)	N/A	N/A	N/A	N/A
	Digital Audio Out (Optical) (Side/Rear)	1/0	1/0	1/0	1/0
	RF In (Terrestrial/Cable input/Satellite Input) (Side/Rear)	1/0	1/0	1/0	1/0
	Ex-Link ( RS-232C ) (Side/Rear)	N/A	N/A	N/A	N/A
	CI Slot (Side/Rear)	0/1	0/1	0/1	0/1

## SPECIFICATIONS

MODEL		32EF690 HG32EF690DB	43EF690 HG43EF690DB	49EF690 HG49EF690DB	55EF690 HG55EF690DB
Input & Output	Scart (Side/Rear)	N/A	N/A	N/A	N/A
	HDMI A / Return Ch. Support	Yes	Yes	Yes	Yes
	Wireless LAN Built-in	Yes	Yes	Yes	Yes
	Anynet+ (HDMI-CEC)	Yes	Yes	Yes	Yes
	Pillow Speaker Jack (Side/Rear)	N/A	N/A	N/A	N/A
	Variable Audio Out (Side/Rear)	1/0	1/0	1/0	1/0
	Variable Audio Out Volume Control (Side/Rear)	1/0	1/0	1/0	1/0
	Video Out (Side/Rear)	N/A	N/A	N/A	N/A
	RJ12 (Side/Rear)	0/1	0/1	0/1	0/1
	RJP (Remote Jackpack) (Side/Rear)	1/0	1/0	1/0	1/0
	Headphone ID (Side/Rear)	0/1	0/1	0/1	0/1
	Door-Eye Control (Side/Rear)	N/A	N/A	N/A	N/A
	Door-Eye Video In (Side/Rear)	N/A	N/A	N/A	N/A
	PC In (D-sub)(Side./Rear)	N/A	N/A	N/A	N/A
	PC/DVI Audio In (Mini Jack)(Side./Rear)	N/A	N/A	N/A	N/A
	Ethernet-Out (LAN-Out) (Side/Rear)	0/1	0/1	0/1	0/1
Design	Front Color	Dark Titan	Dark Titan	Dark Titan	Dark Titan
	Stand Type	Square	Square	Square	Square
	Swivel (Left/Right)	Yes (90/90)	Yes (90/90)	Yes (90/90)	Yes (90/90)
Dimension (WxHxD)	Set Size without Stand (WxHxD)(mm)	730.4 x 433.8 x 54.6	972.9 x 570.1 x 54.0	1105.8 x 645.0 x 54.6	1241.6 x 721.4 x 54.5
	Set Size with Stand (WxHxD)(mm)	730.4 x 483.8 x 192.6	972.9 x 623.0 x 226.5	1105.8 x 698.0 x 226.5	1241.6 x 774.3 x 226.5
	Package Size (WxHxD)(mm)	918.0 x 549.0 x 119.0	1170.0 x 653.0 x 118.0	1300.0 x 746.0 x 130.0	1424.0 x 812.0 x 140.0
Weight	Set Weight without Stand (kg)	5.7	9.7	13	16.2
	Set Weight with Stand (kg)	7.3	12.7	16	19.2
	Package Weight (kg)	9.3	14.9	19.6	24.7
Accessory	Remote Controller Model	TM1240A	TM1240A	TM1240A	TM1240A
	Battery (for Remote Control)	Yes	Yes	Yes	Yes
	Samsung Smart Control (Included)	N/A	N/A	N/A	N/A
	Mini Wall Mount Support	N/A	N/A	N/A	N/A
	Vesa Wall Mount Support	Yes	Yes	Yes	Yes
	Power Cable	Yes	Yes	Yes	Yes
	Quick Install Guide	Yes	Yes	Yes	Yes
	Data Cable	Yes	Yes	Yes	Yes
	Stand Mount Kit	Yes	Yes	Yes	Yes
	Stand Security Screws	N/A	N/A	N/A	N/A
	Angle Adaptor (for Side RF tuner)	N/A	N/A	N/A	N/A
VESA Standard	VESA Size	100x100	200x200	200x200	400x400
	Wall Mount Screw Size	M8	M8	M8	M8

PRODUCT IMAGE



NOTE.

## ABOUT SAMSUNG ELECTRONICS CO., LTD.

Samsung Electronics Co., Ltd. inspires the world and shapes the future with transformative ideas and technologies. The company is redefining the worlds of TVs, smartphones, wearable devices, tablets, cameras, digital appliances, medical equipment, network systems, and semiconductor and LED solutions. For the latest news, please visit Samsung Newsroom at <http://news.samsung.com>

## HOSPITALITY DISPLAYS

For more information about Samsung Hospitality Displays, visit  
[www.samsung.com/business](http://www.samsung.com/business) or  
[www.samsung.com/displaysolutions](http://www.samsung.com/displaysolutions)

Screen images simulated.

Copyright © 2017 Samsung Electronics Co. Ltd. All rights reserved. Samsung is a registered trademark of Samsung Electronics Co. Ltd. Specifications and designs are subject to change without notice. Non-metric weights and measurements are approximate. All data were deemed correct at time of creation. Samsung is not liable for errors or omissions. All brand, product, service names and logos are trademarks and/or registered trademarks of their respective owners and are hereby recognized and acknowledged.

Samsung Electronics Co., Ltd.  
416, Maetan 3-dong, Yeongtong-gu  
Suwon-si, Gyeonggi-do 443-772, Korea

2017-08



Scan this code with your smartphone  
to download the Samsung Display Solutions Mobile App.

**SAMSUNG**